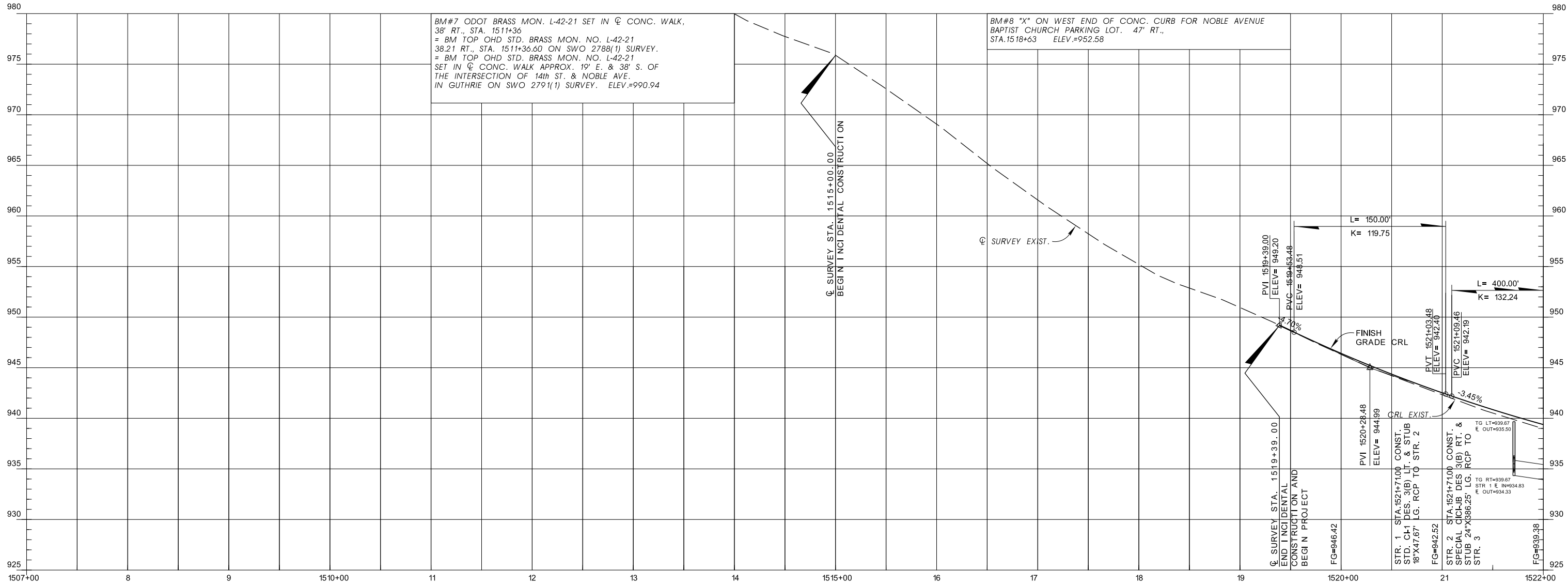


FED. ROAD DIST. NO.	STATE	JOB PIECE NO.	FISCAL YEAR	SHEET NO.	TOTAL SHEETS
6	OKLA.				
DESCRIPTION		REVISIONS		DATE	



BM#7 ODOT BRASS MON. L-42-21 SET IN ϕ CONC. WALK, 38' RT., STA. 1511+36
 = BM TOP OHD STD. BRASS MON. NO. L-42-21 38.21 RT., STA. 1511+36.60 ON SWO 2788(1) SURVEY.
 = BM TOP OHD STD. BRASS MON. NO. L-42-21 SET IN ϕ CONC. WALK APPROX. 19' E. & 38' S. OF THE INTERSECTION OF 14th ST. & NOBLE AVE. IN GUTHRIE ON SWO 2791(1) SURVEY. ELEV.=990.94

BM#8 "X" ON WEST END OF CONC. CURB FOR NOBLE AVENUE BAPTIST CHURCH PARKING LOT. 47' RT., STA.1518+63 ELEV.=952.58

ϕ SURVEY STA. 1515+00.00
 BEGIN INCIDENTAL CONSTRUCTION

ϕ SURVEY EXIST.

L = 150.00'
K = 119.75

PVI 1519+39.00
ELEV = 949.20

PVC 1519+63.48
ELEV = 948.51

FINISH GRADE CRL

PVT 1521+03.48
ELEV = 942.40

PVI 1520+28.48
ELEV = 944.99

CRL EXIST.

STR. 1 STA.1521+71.00 CONST. STD. CH-1 DES. 3(B) LI. & STUB 18"X47.67' LG. RCP TO STR. 2

STR. 2 STA.1521+71.00 CONST. SPECIAL CH-1B DES 3(B) RT. & STUB 24"X386.25' LG. RCP TO STR. 3

STR. 3

FG=946.42

FG=942.52

FG=939.38

TG LT=939.67
E. OUT=935.50

TG RT=939.67
STR 1 E IN=934.83
E. OUT=934.33

L = 400.00'
K = 132.24

-3.45%

DESIGN	
DRAWN	LL
CHECKED	
APPROVED	
SQUAD	GREEN

OKLAHOMA DEPARTMENT OF TRANSPORTATION
ROADWAY DESIGN DIVISION

PROFILE SHEET

STATE JOB NO. 21860(04) SHEET NO. R021
LOGAN CO. SH-33